



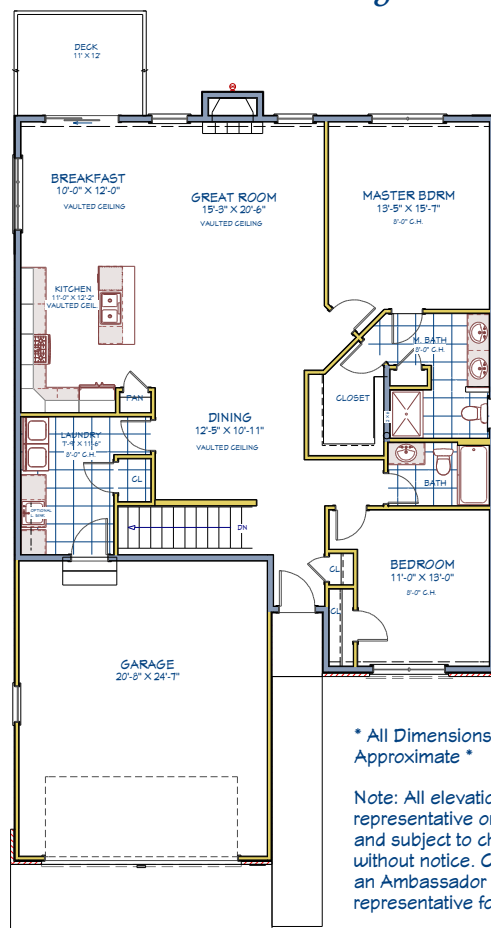
The Cambridge I

Total Living: 1625 s.f.



Standard Features:

- * Open Kitchen w/ Granite Tops
- * Quality Cabinets
- * Many Cabinet Styles & Colors
- * 18 x 18 Tile Floors
- * Upgraded Carpet & Pad
- * Tall Painted Base & Casing
- * 6 Panel Doors
- * Gas or Wood Fireplace
- * Vaulted Ceilings Kit/Great/Dining
- * First Floor Laundry w/ Tile
- * Large Master w/ Walk-in Closet
- * Master Bath w/ Tile Floor
- * Nickel or Bronze Fixtures & Levers
- * 2 x 6 Exterior Walls
- * R21 Exterior Insulation
- * Architectural Roof Shingles
- * R49 Attic Insulation
- * Jeld-Wen Vinyl Windows
- * Low-E Window Glazing
- * Full Basement Garden Windows
- * 90+ Furnace w/ Central Air
- * Maintenance Free Siding
- * Double Lifetime Siding Warranty
- * Brick Fronts



* All Dimensions are Approximate *

Note: All elevations are representative only and subject to change without notice. Consult an Ambassador Homes representative for details.



The Cambridge II

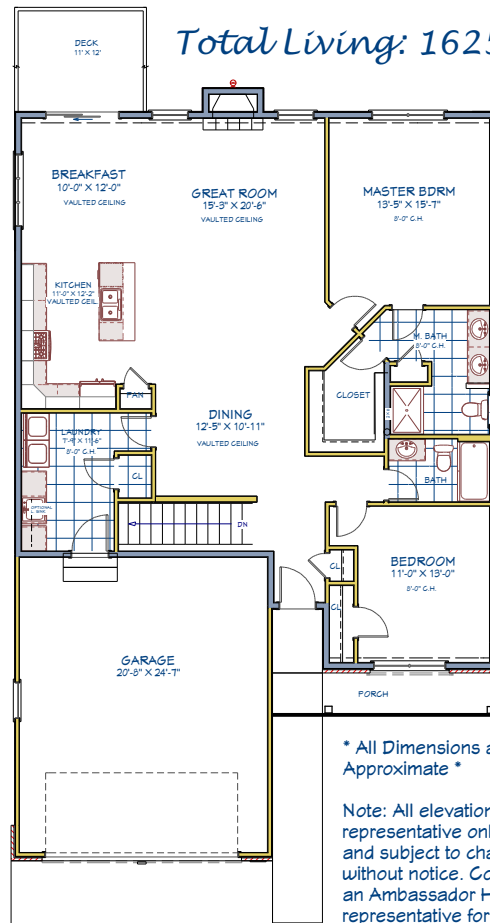


Standard Features:

- * Open Kitchen w/ Granite Tops
- * Quality Cabinets
- * Many Cabinet Styles & Colors
- * 18 x 18 Tile Floors
- * Upgraded Carpet & Pad
- * Tall Painted Base & Casing
- * 6 Panel Doors
- * Gas or Wood Fireplace
- * Vaulted Ceilings Kit/Great/Dining
- * First Floor Laundry w/ Tile
- * Large Master w/ Walk-in Closet
- * Master Bath w/ Tile Floor
- * Nickel or Bronze Fixtures & Levers
- * 2 x 6 Exterior Walls
- * R21 Exterior Insulation
- * Architectural Roof Shingles
- * R49 Attic Insulation
- * Jeld-Wen Vinyl Windows
- * Low-E Window Glazing
- * Full Basement Garden Windows
- * 90+ Furnace w/ Central Air
- * Maintenance Free Siding
- * Double Lifetime Siding Warranty
- * Brick Fronts



Total Living: 1625 s.f.



* All Dimensions are Approximate *

Note: All elevations are representative only and subject to change without notice. Consult an Ambassador Homes representative for details.

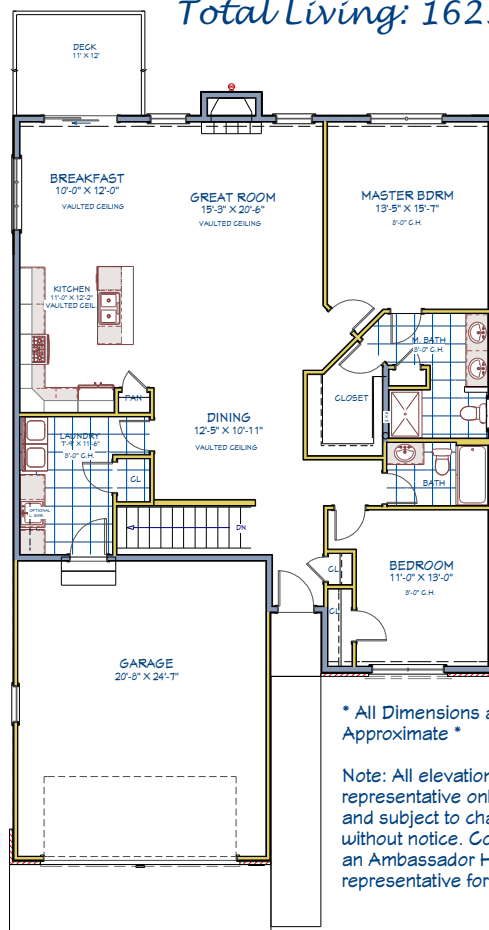


The Cambridge III

Total Living: 1625 s.f.

Standard Features:

- * Open Kitchen w/ Granite Tops
- * Quality Cabinets
- * Many Cabinet Styles & Colors
- * 18 x 18 Tile Floors
- * Upgraded Carpet & Pad
- * Tall Painted Base & Casing
- * 6 Panel Doors
- * Gas or Wood Fireplace
- * Vaulted Ceilings Kit/Great/Dining
- * First Floor Laundry w/ Tile
- * Large Master w/ Walk-in Closet
- * Master Bath w/ Tile Floor
- * Nickel or Bronze Fixtures & Levers
- * 2 x 6 Exterior Walls
- * R21 Exterior Insulation
- * Architectural Roof Shingles
- * R49 Attic Insulation
- * Jeld-Wen Vinyl Windows
- * Low-E Window Glazing
- * Full Basement Garden Windows
- * 90+ Furnace w/ Central Air
- * Maintenance Free Siding
- * Double Lifetime Siding Warranty
- * Brick Fronts



* All Dimensions are Approximate *

Note: All elevations are representative only and subject to change without notice. Consult an Ambassador Homes representative for details.